

DAILY REPORT #14 – DORIS NORTH INFRASTRUCTURE/ NORTH DAM

Prepared by:	John Kurylo/ Jeff Orr / Megan Miller	Date:	2012.01.19
Reviewed by:		Project #:	1CH008.058.0320
Role	Company	Personnel – Position	On Site
Client	Hope Bay Mining Limited (HBML)	Angela Holzapfel – ESR Compliance Manager David Vokey – ESR Coordinator Don Ethelston – HSLP Advisor Dean Wold - Safety Jill Turk – ESR Coordinator Katsky Venter – ESR Manger Michelle Tanquay – ESR Site Manager Stirling Kelly – HSLP Advisor	No Yes In No No No Yes Out
	JDS	Lloyd Jackson – Mechanical Superintendent Sven Archimowtiz – Electrical Superintendent Doug Fielding – Construction Manager Ishan Fechter – Construction Coordinator Jerry Graham – Construction Manager Kevin Whieldon – Project Coordinator Mark Valeriote – Construction Manager	Out Yes In Yes Out No Yes
Engineering Design Consultants	SRK Consulting (Canada) Inc.	John Kurylo – Site Engineer Megan Miller – Site Engineer Lawrence Borowski – Site Engineer Murry McGregor – Site Engineer Lowell Wade – Senior Engineer	Yes In No No No
	EBA Engineering Consultants Ltd.	Jeff Orr – Project Manager Jennifer Stirling – Geologist Thomas Bradshaw – Junior Engineer	Yes In No
Earthworks Contractor	Nuna Logistics	Bradford Watkin – QC Manager Dale Craig – Safety Don Webber – Foreman Doug Haverland – Area Superintendent Gary Sodhi – Field Engineer Georges Cornelissen – Survey Manager Jeff Roberts - Surveyor Jim Cardinal – Foreman Kevin Oakes – Project Engineer Kevin Kozdrowski – Foreman Margret Caley – Surveyor Matt McKay – Civil Supervisor Mike MacMaster – Surveyor Mike Price – Field Engineer Nick Stoneberger – Superintendent Rick Peters – Foreman Ron MacMaster – Surveyor Simon Chipper – Civil Supervisor	No No No In Out In Yes Yes No No In Yes Yes In Out Out Yes No
External Distribution List:	SRK: Maritz Rykaart, Lowell Wade, Iozsef Miskolczi, Seema Kang, Silkie Wong EBA: Robert Zschuppe Nuna: Chris Petrovic JDS: Bob Prince-Wright HBML: Dave Power, Gerry Benson		
This Construction Daily Report is produced as an internal communication document between SRK site and head office staff. Any distribution of this report outside of SRK is done as a courtesy, and the information contained in this report are for information only to those external parties.			

WEATHER (ROBERTS BAY)

<http://www.wunderground.com/weatherstation/WXDailyHistory.asp?ID=INUNAVUT3>

Temperature/Wind Chill (°C)	6AM:-32.7/-32.7	12PM:-32.8/-36	6 PM: -32.8/-32.8	12 AM:-35.4/-35.4
Precipitation (mm)	Rain: None		Snow: Trace	
Conditions	Day Shift: Calm.		Night Shift: Calm, very light snow.	
Daily norms (°C)	24 hour high: -31.8		24 hour low: -35.4	

HEALTH, SAFETY AND ENVIRONMENT

- Megan Miller attended refresher orientation and did WHIMS Module.
- Jennifer Sterling will attend site orientation tomorrow morning.
- ESR approached SRK and asked if they could investigate and arrange for repair of a thermistor at the Jetty that is no longer working (reference location SD4-DWG-J-01) was given. This is a monthly monitoring location that is part of the Water License obligations. SRK to investigate and follow-up with ESR in the coming week.

COMMENTS, CORRESPONDENCE AND ACTIVITIES**DAILY MEETING WITH NUNA AND HBML TEAM:**

- The daily meet was attended by ADCO, ACI, Williams Wireless, Nuna [Nick Stoneberger, Kevin Oakes, Gary Sodhi], ESR [Michelle Tanquay], Newmont Safety [Stirling Kelly], JDS [Jerry Graham, Ishan Fechter, Lloyd Jackson, Mark Valeriote], SRK [John Kurylo], EBA [Jeff Orr].

Topic	Status
Health and Safety and Environment	<ul style="list-style-type: none"> • The use of the Electra, weight limits and offloading procedures were discussed. • A leak at the Fire Water Tank/ module was noted. A failed valve was repaired. • No issues to report from ESR. • ESR will be touring the site today.
North Dam	<ul style="list-style-type: none"> • Dam issues with feed were occurring at the FCP yesterday. The outside belt from the hopper to the FCP was losing power. Consistency of material was posing problems due to frozen lumps in the feed stock at the plant. Nuna, JDS and SRK/EBA to further investigate ways to decrease the frequency of frozen lumps being fed to the FCP. • The crew for the North Dam will be changing today. • SRK to drop of generator at Kingland Ford shop today.
Water Management Structures	<ul style="list-style-type: none"> • The alignment at the Doirs North Diversion berm has now been staked. • SRK to finalize revised Sump 1 location in the coming days. • Westarc is arriving on site today to drill around the sump locations.
General	<ul style="list-style-type: none"> • ACI needs to borrow some equipment from ATCO at the vent raise. • One of ATCO's light plants is missing. • ATCO requested that snow be removed from the fuel berms by the stacks, so containment is available if a spill was to occur. Nuns to assist with the latter.

SURVEY:

Required	•
Data Received	<ul style="list-style-type: none"> • AB 120118 ND FCM.csv • AB 120118 ND FC_save.dwg, and .pdf
Outstanding	• Survey data from as-built pick-up for FCM placed on 2012/01/18
Upcoming	<ul style="list-style-type: none"> • Survey of frozen core surface after cleaning/ scraping activities at N. Dam (on going). • Survey of FCM after placement (on going).

NORTH DAM/FROZEN CORE PLANT PAD:**Frozen Core Plant**

- Maintenance resulted at the FCP today. The electricians visited the FCP plant to investigate recent power issues.
- Once an error code is gathered from the FCP then the electricians plan to revisit the
- A 345 excavator was used to try and dig into the stockpile of FCM on the FCP pad. The unsaturated frozen clumps of FCM were noted to go deep into the pile.
 - After discussions with the crusher/ FCP operator it became apparent that, last summer, while crushing water was used to assist with dust control.
 - Further it was noted that when material was hauled to the FCP plant pad that there was some rain. Precipitation.
 - The majority of the FCM stockpile appears to have large clumps of unsaturated FCM intermixed throughout the pile.

Dam Shell

- No significant activity.

Key Trench

- The 330 excavator (equipped with a finishing bucket) and 345 excavator (equipped with toothed bucket) was used during dayshift to assist with removal of additional frozen 5/8" clear material.
 - Most cleaning resulted between ~ 0+40 and 1+70.
- Nuna survey picked up and as-built of the lift placed on 2012/01/18.
- No FCM placement resulted today.
- Key trench cleaning occurred during the night shift.
 - The key trench was dental cleaned near Sta. 1+00 with the air compressor.
 - 5/8" material in the key trench north of Sta. 1+20 was scrapped with the excavator using the finishing bucket.
- An as-built figure showing the areas of placement for 2012/01/15 and 2012/01/17 is provided at the end of this report.

Field Geotechnical Testing, Laboratory and Sampling

- Single bead #59 was read. Freeze back of the lift placed on 2012/01/18 was achieved.

SINGLE BEAD THERMISTOR STATUS

Installed Today			Active			Destroyed / Abandoned		
ID	Station	US/DS/Center	ID	Station	US/DS/Center	ID	Station	US/DS/Center
			36	0+92	D/S			
			53	0+85	Center			
			59	0+90	D/S			

RECENT SINGLE BEAD MEASUREMENTS

SingleBead No.	Temperature (°C)		Date Installed
	Jan 18 th at 18:30	Jan 19 th at 11:15	
59	10.94	-4.49	2012/01/17

- A summary of the material testing progress for 2012/01/19 is presented in the tables below.

PARTICLE SIZE DISTRIBUTION SUMMARY

Collected	Processed	Completed
	HB-FCP-CORE-PSD3-QA-20110118	HB-FCP-CORE-PSD2-QA-20110117

MOISTURE CONTENT SUMMARY

Collected	Processed	Completed
	HB-FCP-CORE-MC6-QA-20110118	HB-FCP-CORE-MC3-QA-20110117 HB-FCP-CORE-MC4-QA-20110117 HB-FCP-CORE-MC5-QA-20110117

DRILLED CORE SUMMARY

Drilled			Processed			Completed		
ID	Station	US/DS/Centre	ID	Station	US/DS/Centre	ID	Station	US/DS/Centre
DC2	0+86	Center	DC1	1+30	D/S			
DC3	0+97	D/S						

Locations of drilled core are shown in Photo 14 and cores are shown as Photos 12 and 13.

DORIS NORTH CAMP:

- The snow road around the Doris North Diversion Berm continues. Minor additional work was completed on the snow road.
- SRK inspected the sumps that are in the process of being fabricated. Photos 8 and 9 show progress of the sump fabrication. Hole/ slots in sumps were cut in the corrugated steel today.

GENERAL:

- Megan Miller and Jennifer Sterling arrived on site at ~2:30 pm. The flight leaving Edmonton was delay due to mechanical issues.
- A town hall meeting was held at 8:30 am today. Jim Spenceley was onsite to discuss recent developments and Board of Directors discussions regarding Hope Bay. Drilling activities on site are currently on hold, current construction projects continue as usual. An additional update will be given at the beginning of February.

PHOTOS:



Photo 1: 345 excavator digging into frozen stockpile of FCM at FCP Plant Pad.

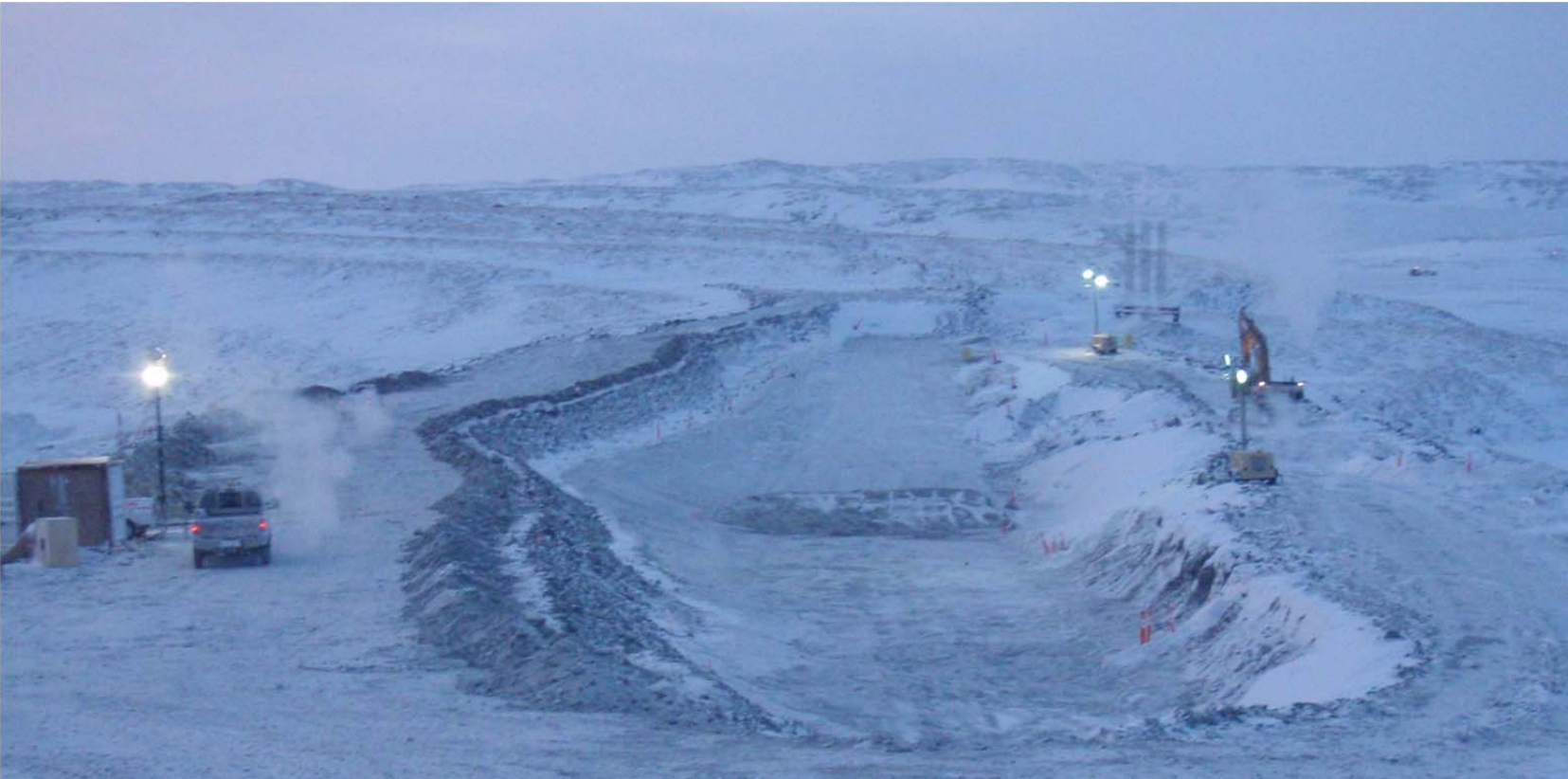


Photo 2: ~SWW view down key trech. Note the darker material in the central key trench area is the material that was placed on 2012/01/17 and 2012/01/18.



Photo 3: ~W view of 330 excavator scraping down 5/8" material in the key trench. Note the excavator is cleaning around station 0+50 in this photo.



Photo 4: 345 excavator (with toothed bucket) ripping up frozen 5/8" material near station 1+70.



Photo 5: ~W view of the Roberts Bay area.



Photo 6: ~ NE view from the Roberts Bay Overburden dump towards the Quarry #1 Tank Farm.



Photo 7: ~SWW view of the Quarry #2 crusher area.



Photo 8: View of the Doris North Camp Sump fabrication progress.



Photo 9: Close up view of slots being cut in the DN Camp Sumps.

Photo 10: Setting up to take cores in the key trench, ~ NE view.



Photo 11: ~SEE view of key trench locations what were cored today. Note that the yellow cylinders mark the ~ locations that cores were drilled from.



Photo 12 (center left): DC2 taken at 0+86, near centerline. The use of additional glycol was used in DC3 in increase recovered



Photo 13 (center right): DC3 taken at 0+97 on the downstream. Taken at the edge of the lift placed on 2012/01/17.



Photo 14: View at the location of drilled core 2. Note the interface connection noted between the recent lift and 2011 FCM at this location. Note that this area is near the edge of the lift placed on 2012/01/17. Bonding between layers is expected to be better in the areas where a larger mass/ volume of core material were placed. Additional cores to be taken in the coming days to better investigate bonding between lifts.

FIGURE:

- An as-built figure showing the areas of placement for 2012/01/15 and 2012/01/17 is provided at the end of this report.

